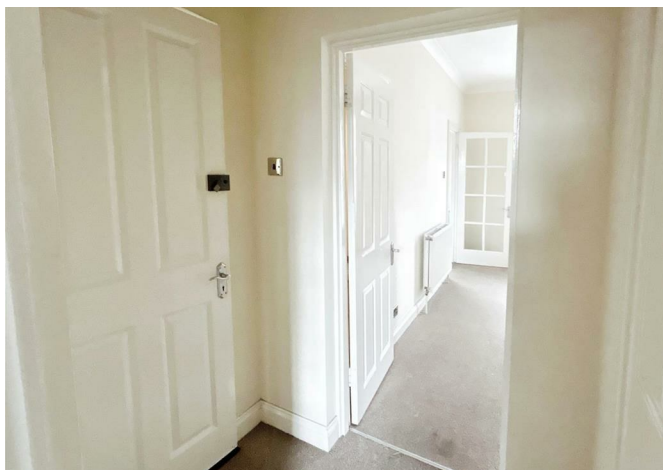




Flat 3, 10 High Street, Herne Bay, CT6 5LH
£995 Per month



Flat 3, 10 High Street, Herne Bay, CT6 5LH £995 Per month

This spacious and well-presented first-floor flat is now available for immediate rent. Ideally located in a central position on High Street, it offers unparalleled access to all amenities, including the town cen, railway station, and the beach, all just a short walk away.

The property features a good-sized lounge, perfect for relaxing or entertaining. The modern kitchen has adequate space and the contemporary shower room.

With a comfortable double bedroom and an additional versatile room, this flat provides ample living space. The extra room is ideal as a home office or nursery, catering to a variety of lifestyle needs.

Available for immediate occupancy, this flat is a perfect fit for professionals or small families seeking convenience and comfort in a vibrant location. Don't miss out—schedule a viewing today!

Description

Tenancy Information

Refundable Holding Fee- £229

Monthly Rent- £995

Deposit- £1148

Deposits will be lodged via TDS Custodial -

Information relating to this can be seen below:

<https://custodial.tenancydepositscheme.com/tenants/>

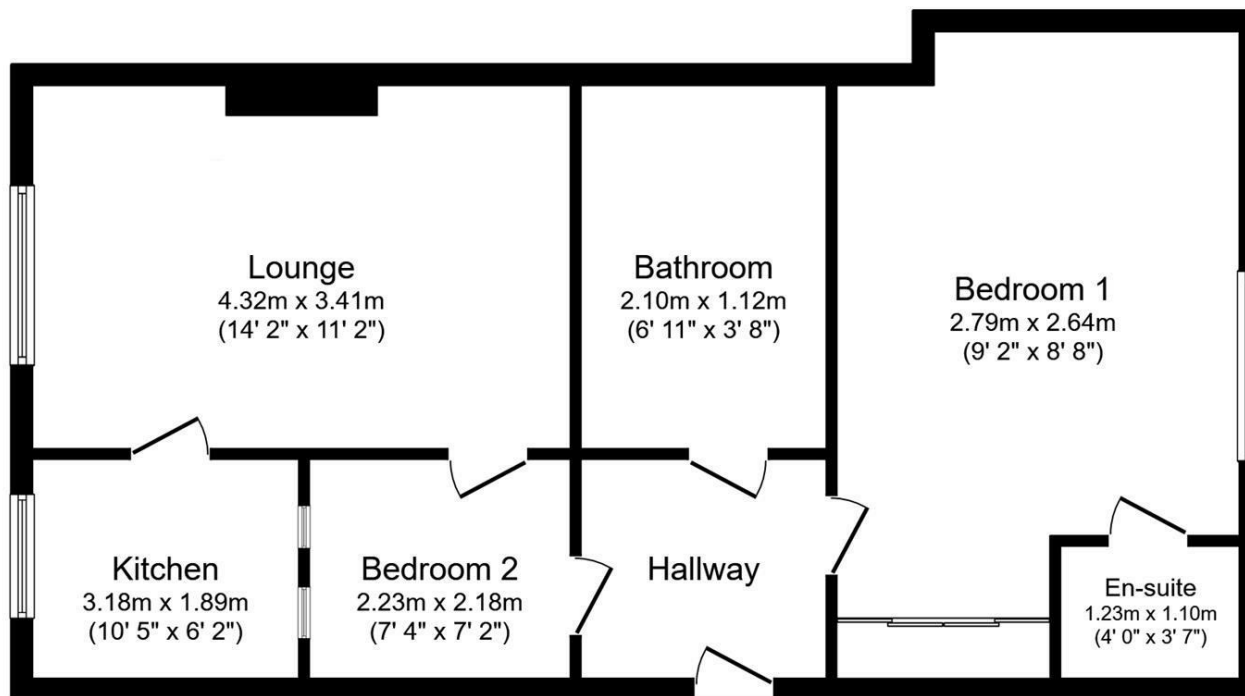
Should you wish to apply for this property, complete the application form link below:

<https://www.zesthomes.uk/rental-application/>

Situation

Herne Bay is a seaside town located in Kent, south-eastern England. The town is situated on the coast of the English Channel and is known for its safe bathing beaches, grand promenade, marina, pier, parks, and gardens. A number of popular attractions are located near the town, including Canterbury Cathedral, the White Cliff's of Dover, and the stunning Sissinghurst Castle. Herne Bay is a popular destination for both locals and tourists. The town has a wide range of restaurants, pubs, independent shops, and entertainment venues. The town is also known for activities such as sailing, windsurfing, kite surfing, and kayaking.

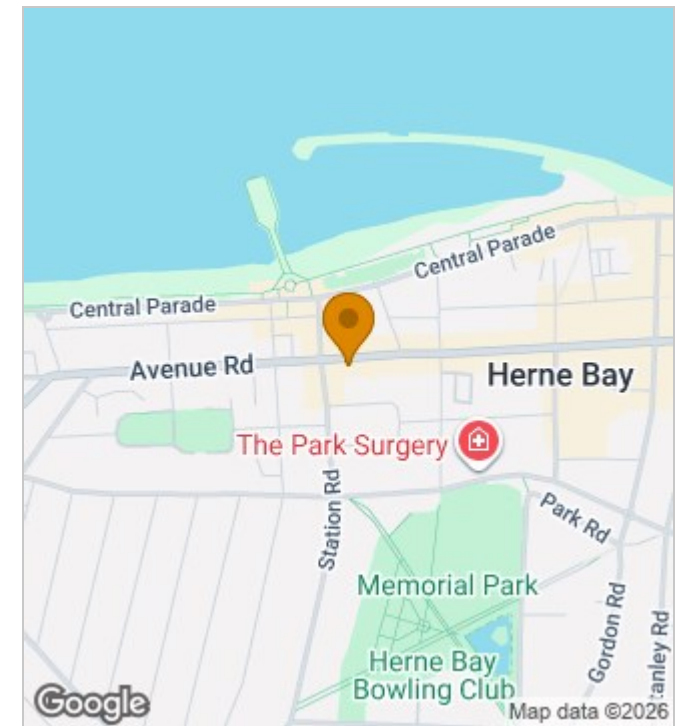




Floor Plan
Floor area 72.3 m² (778 sq.ft.)

TOTAL: 72.3 m² (778 sq.ft.)

This floor plan is for illustrative purposes only. It is not drawn to scale. Any measurements, floor areas (including any total floor area), openings and orientations are approximate. No details are guaranteed, they cannot be relied upon for any purpose and do not form any part of any agreement. No liability is taken for any error, omission or misstatement. A party must rely upon its own inspection(s). Powered by www.Propertybox.io



Energy Efficiency Rating

	Current	Potential
Very energy efficient - lower running costs		
(92 plus) A		
(81-91) B		81
(69-80) C	72	
(55-68) D		
(39-54) E		
(21-38) F		
(1-20) G		
Not energy efficient - higher running costs		
England & Wales	EU Directive 2002/91/EC	

190 High Street, Herne Bay, Kent, CT6 5AP
Tel: 01227 949291 | Email: sales@zesthomes.uk
www.zesthomes.uk

1. Money Laundering Regulations: Please note all sellers and intended purchasers will receive an 'On Boarding' link to verify their identity. This is a legal requirement prior to a sale or purchase proceeding.
2. All measurements stated on our details and floorplans are approximate and as such can not be relied upon and do not form part of any contracts.
3. Zest Homes have not tested any services, equipment or appliances and it is therefore the responsibility of any buyer/tenant to do so.
4. Photographs and marketing material are produced as a guide only and legal advice should be sought to verify fixtures and fittings, planning, alterations and lease details.
5. Zest Homes hold the copyright to all advertising material used to market this property.